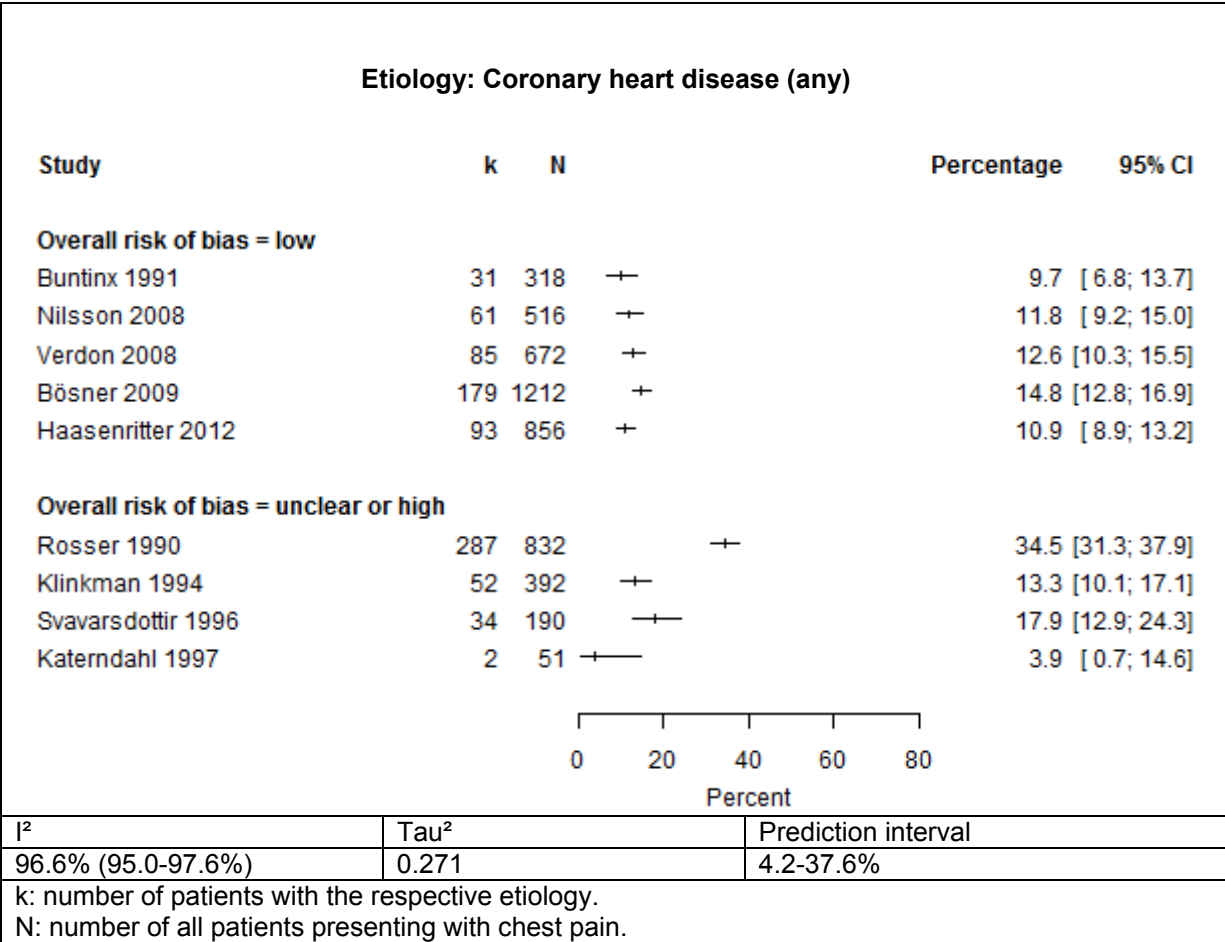
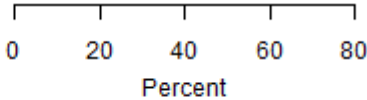


Supplement 3: Forest plots



Etiology: Coronary heart disease (stable)

Study	k	N		Percentage	95% CI
Overall risk of bias = low					
Sox 1990	23	289	+-	8.0	[5.2; 11.9]
Buntinx 1991	21	318	+-	6.6	[4.2; 10.1]
Verdon 2008	75	672	+-	11.2	[8.9; 13.8]
Bösner 2009	135	1212	+	11.1	[9.5; 13.1]
Haasenritter 2012	71	856	+	8.3	[6.6; 10.4]
Overall risk of bias = unclear or high					
Klinkman 1994	41	392	+-	10.5	[7.7; 14.0]



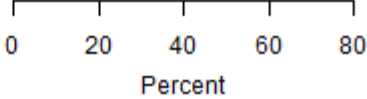
0 20 40 60 80
Percent

I ²	Tau ²	Prediction interval
54.2% (0.0-81.6%)	0.024	6.1-14.7%

k: number of patients with the respective etiology.
N: number of all patients presenting with chest pain.

Etiology: Acute coronary syndrome/ myocardial infarction

Study	k	N		Percentage	95% CI
Overall risk of bias = low					
Buntinx 1991	10	318	+-	3.1	[1.6; 5.9]
Verdon 2008	10	672	+	1.5	[0.8; 2.8]
Bösner 2009	44	1212	+	3.6	[2.7; 4.9]
Haasenritter 2012	22	856	+	2.6	[1.7; 3.9]
Overall risk of bias = unclear or high					
Rosser 1990	24	832	+	2.9	[1.9; 4.3]
Klinkman 1994	6	392	+	1.5	[0.6; 3.5]
Svavarsdottir 1996	4	190	+-	2.1	[0.7; 5.7]



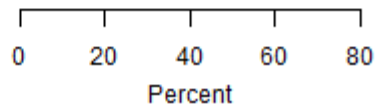
0 20 40 60 80
Percent

I ²	Tau ²	Prediction interval
40.4% (0.0-74.9%)	0.048	1.4-4.9%

k: number of patients with the respective etiology.
N: number of all patients presenting with chest pain.

Etiology: Cardiovascular diseases

Study	k	N		Percentage	95% CI
Overall risk of bias = low					
Buntinx 1991	44	318	++	13.8	[10.3; 18.2]
Verdon 2008	108	672	+	16.1	[13.4; 19.1]
Overall risk of bias = unclear or high					
Bryninckx 2009	741	1996	+	37.1	[35.0; 39.3]

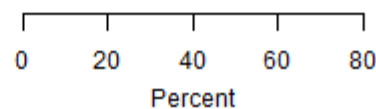


I ²	Tau ²	Prediction interval
98.6% (97.5-99.2%)	0.494	0.0-100.0%

k: number of patients with the respective etiology.
 N: number of all patients presenting with chest pain.

Etiology: Gastrointestinal disorders

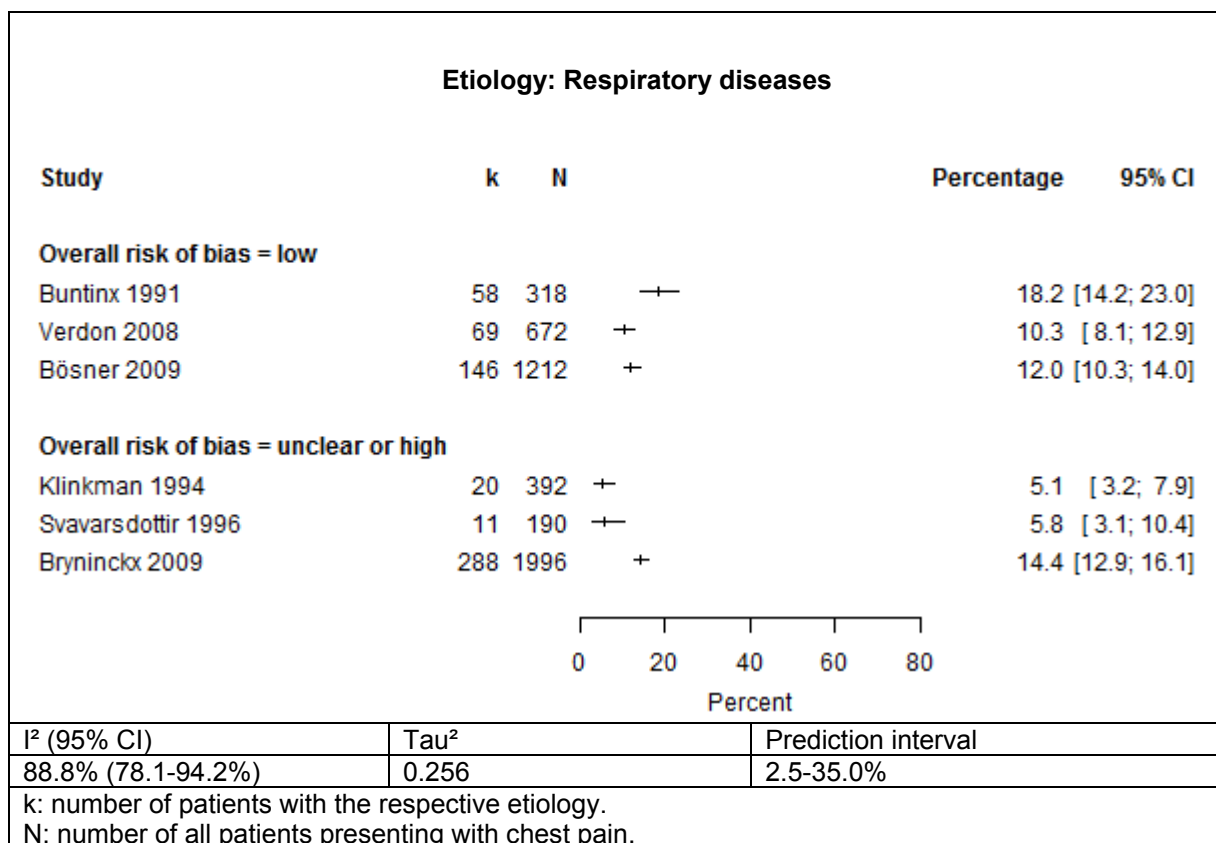
Study	k	N		Percentage	95% CI
Overall risk of bias = low					
Buntinx 1991	31	318	++	9.7	[6.8; 13.7]
Verdon 2008	55	672	+	8.2	[6.3; 10.6]
Bösner 2009	68	1212	+	5.6	[4.4; 7.1]
Overall risk of bias = unclear or high					
Rosser 1990	114	832	+	13.7	[11.5; 16.3]
Klinkman 1994	74	392	++	18.9	[15.2; 23.2]
Svavarsdottir 1996	7	190	++	3.7	[1.6; 7.7]
Katerndahl 1997	5	51	+++	9.8	[3.7; 22.2]
Bryninckx 2009	161	1996	+	8.1	[6.9; 9.4]



I ²	Tau ²	Prediction interval
92.1% (86.8-95.3%)	0.247	2.7-27.0%

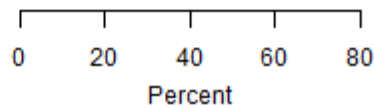
k: number of patients with the respective etiology.
 N: number of all patients presenting with chest pain.

Ae		
I^2		
93.9% (85.5-97.4%)	0.577	0.0-99.9%
k: number of patients with the respective etiology. N: number of all patients presenting with chest pain.		



Etiology: Psychogenic

Study	k	N		Percentage	95% CI
Overall risk of bias = low					
Buntinx 1991	58	318	—	18.2	[14.2; 23.0]
Verdon 2008	77	672	+	11.5	[9.2; 14.2]
Bösner 2009	115	1212	+	9.5	[7.9; 11.3]
Overall risk of bias = unclear or high					
Rosser 1990	62	832	+	7.5	[5.8; 9.5]
Klinkman 1994	29	392	+	7.4	[5.1; 10.6]
Svavarsdottir 1996	9	190	—	4.7	[2.3; 9.1]
Bryninckx 2009	194	1996	+	9.7	[8.5; 11.1]

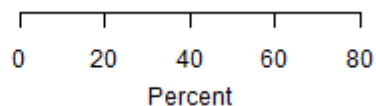


I ²	Tau ²	Prediction interval
84.8% (70.6-92.2%)	0.148	3.5-23.4%

k: number of patients with the respective etiology.
N: number of all patients presenting with chest pain.

Etiology: Acute anxiety/ panic

Study	k	N		Percentage	95% CI
Overall risk of bias = low					
Verdon 2008	17	672	+	2.5	[1.5; 4.1]
Overall risk of bias = unclear or high					
Klinkman 1994	16	397	+	4.0	[2.4; 6.6]
Katerndahl 1997	16	51	—	31.4	[19.5; 46.0]

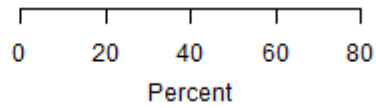


I ²	Tau ²	Prediction interval
96.6% (92.9-98.4%)	2.271	0.0-100.0%

k: number of patients with the respective etiology.
N: number of all patients presenting with chest pain.

Etiology: Depression

Study	k	N	Percentage	95% CI
Overall risk of bias = low				
Verdon 2008	6	672	0.9	[0.4; 2.0]
Overall risk of bias = unclear or high				
Katerndahl 1997	3	51	5.9	[1.5; 17.2]



I^2	Tau^2	Prediction interval
86.1% (NA)	1.615	NA

k: number of patients with the respective etiology.
 N: number of all patients presenting with chest pain.

Etiology: Chest wall syndrome

Study	k	N	Percentage	95% CI
Overall risk of bias = low				
Buntinx 1991	78	318	24.5	[20.0; 29.7]
Verdon 2008	328	672	48.8	[45.0; 52.7]
Bösner 2009	604	1212	49.8	[47.0; 52.7]
Overall risk of bias = unclear or high				
Rosser 1990	212	832	25.5	[22.6; 28.6]
Klinkman 1994	132	392	33.7	[29.1; 38.6]
Svavarsdottir 1996	106	190	55.8	[48.4; 62.9]
Katerndahl 1997	9	51	17.6	[8.9; 31.4]
Bryninckx 2009	600	1996	30.1	[28.1; 32.1]

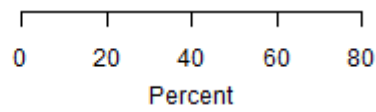
0 20 40 60 80
Percent

I^2	Tau ²	Prediction interval
97.4% (96.2-98.2%)	0.34	10.7-71.4%

k: number of patients with the respective etiology.
 N: number of all patients presenting with chest pain.

Etiology: Trauma

Study	k	N	Percentage	95% CI
Overall risk of bias = low				
Verdon 2008	26	672 +	3.9	[2.6; 5.7]
Bösner 2009	39	1212 +	3.2	[2.3; 4.4]
Haasenritter 2012	15	856 +	1.8	[1.0; 2.9]
Overall risk of bias = unclear or high				
Rosser 1990	27	832 +	3.2	[2.2; 4.8]
Klinkman 1994	7	397 +	1.8	[0.8; 3.8]



I^2	Tau^2	Prediction interval
53.5% (0.0-82.9%)	0.061	1.1-6.8%

k: number of patients with the respective etiology.
 N: number of all patients presenting with chest pain.