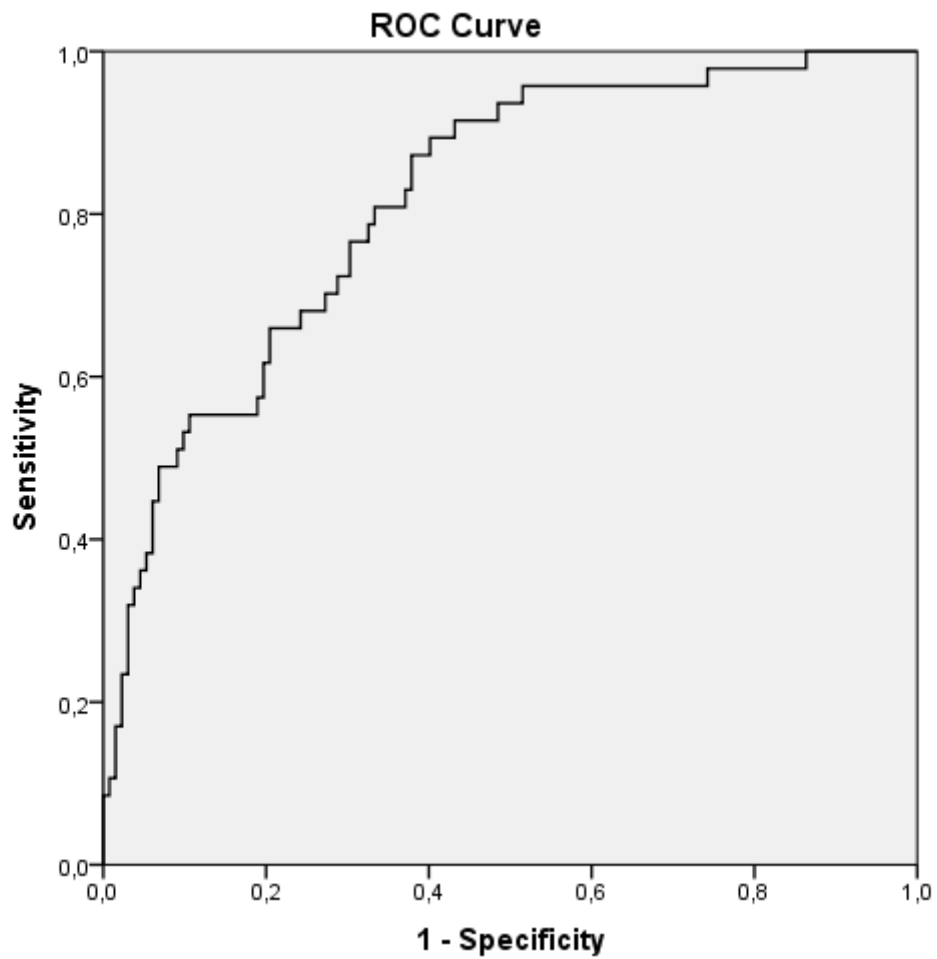


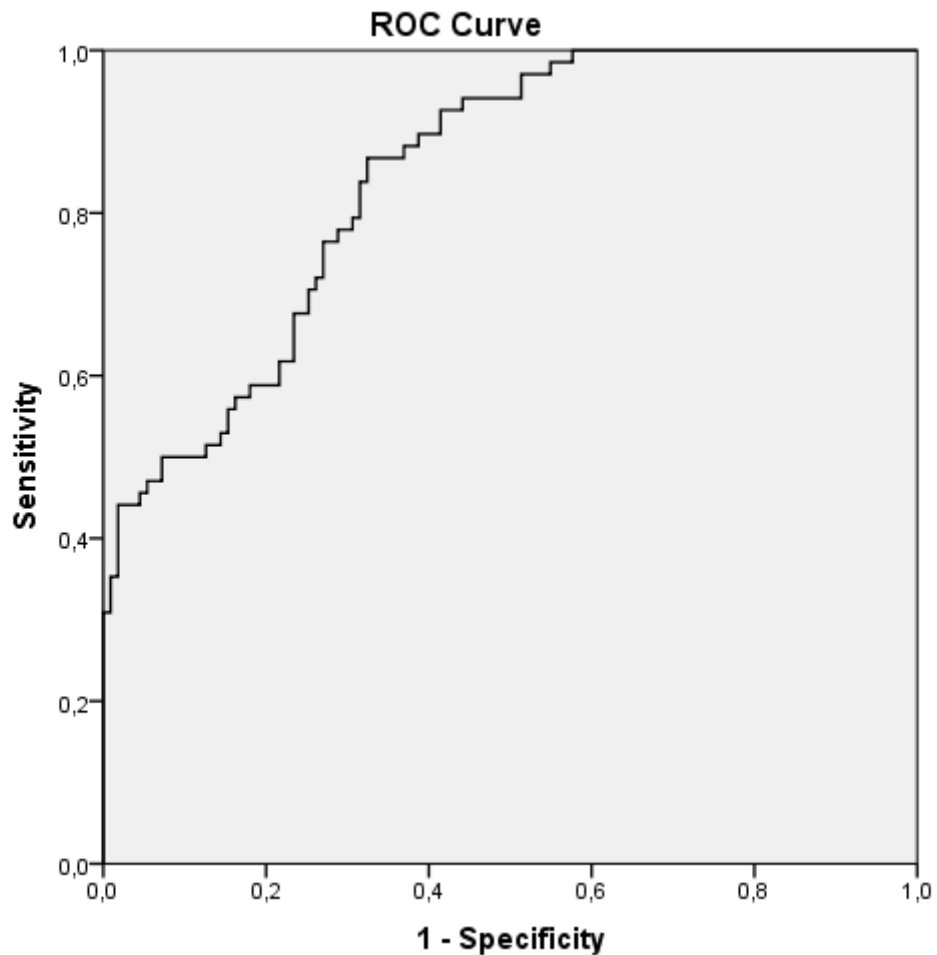
Figure 1b. ROC curve indicating effectiveness of COMPASS 31 total score in detection of MS patients with Vasomotor domain score greater than 0



Vasomotor domain

- The area under the curve was 0.817.
- Optimal cut-off :
Total COMPASS 31 score=13.9 → Sensitivity=0.809; Specificity=0.667
- Mean value cut-off:
Total COMPASS 31 score=16.3 → Sensitivity=0.723; Specificity=0.712

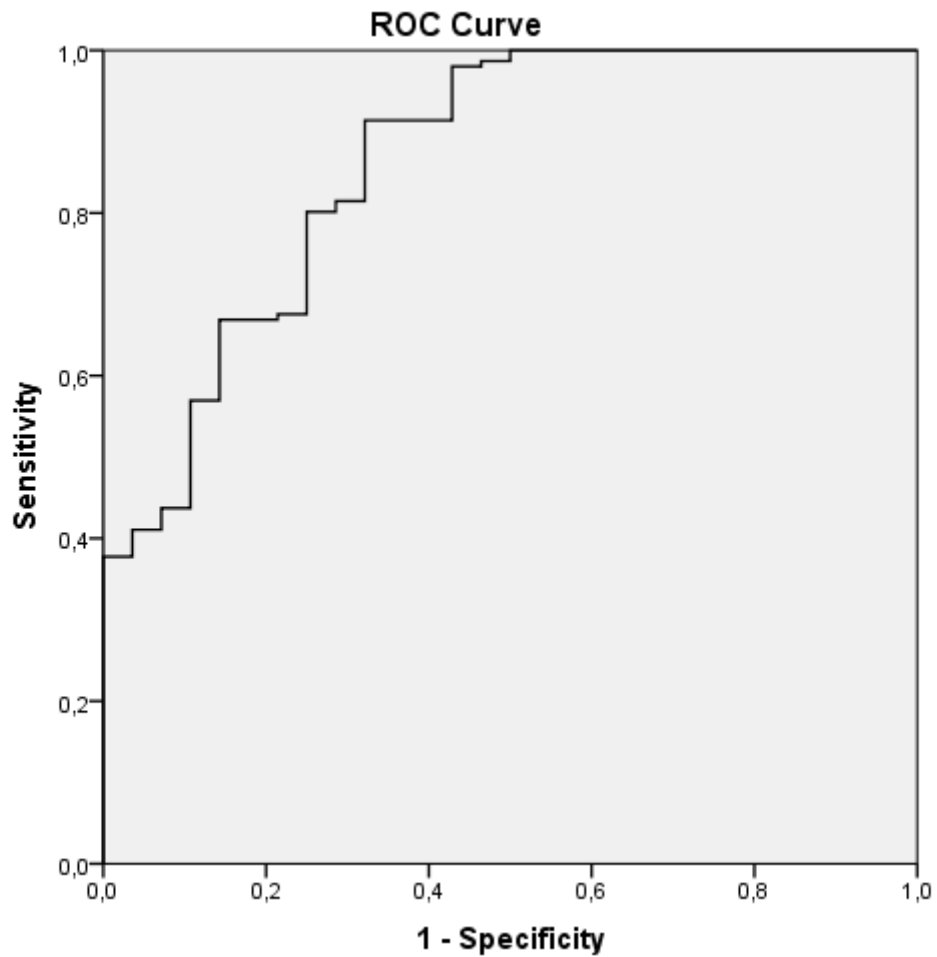
Figure 1c. ROC curve indicating effectiveness of COMPASS 31 total score in detection of MS patients with Secretomotor domain score greater than 0



Secretomotor domain

- The area under the curve was 0.844.
- Optimal cut-off :
Total COMPASS 31 score=11.4 → Sensitivity=0.886; Specificity=0.676
- Mean value cut-off:
Total COMPASS 31 score=16.3 → Sensitivity=0.676; Specificity=0.766

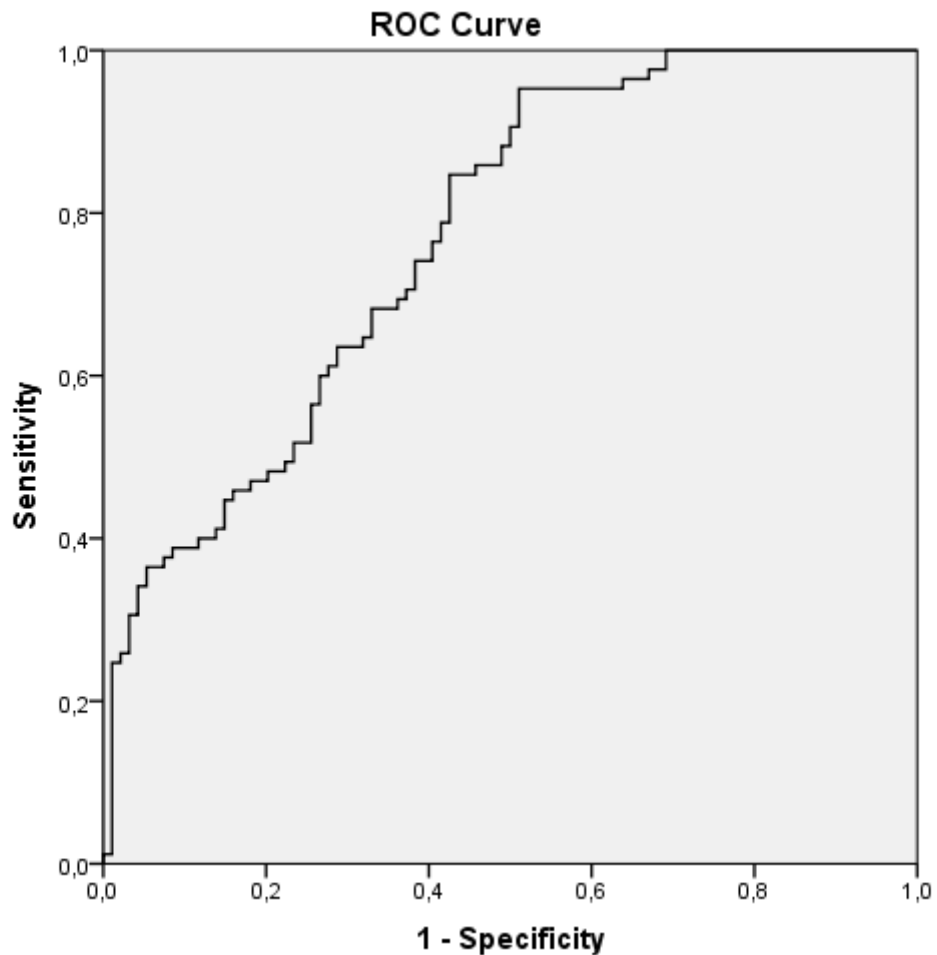
Figure 1d. ROC curve indicating effectiveness of COMPASS 31 total score in detection of MS patients with Gastrointestinal domain score greater than 0



Gastrointestinal domain

- The area under the curve was 0.862.
- Optimal cut-off :
Total COMPASS 31 score=5.1 → Sensitivity=0.801; Specificity=0.750
- Mean value cut-off:
Total COMPASS 31 score=16.3 → Sensitivity=0.457; Specificity=0.893

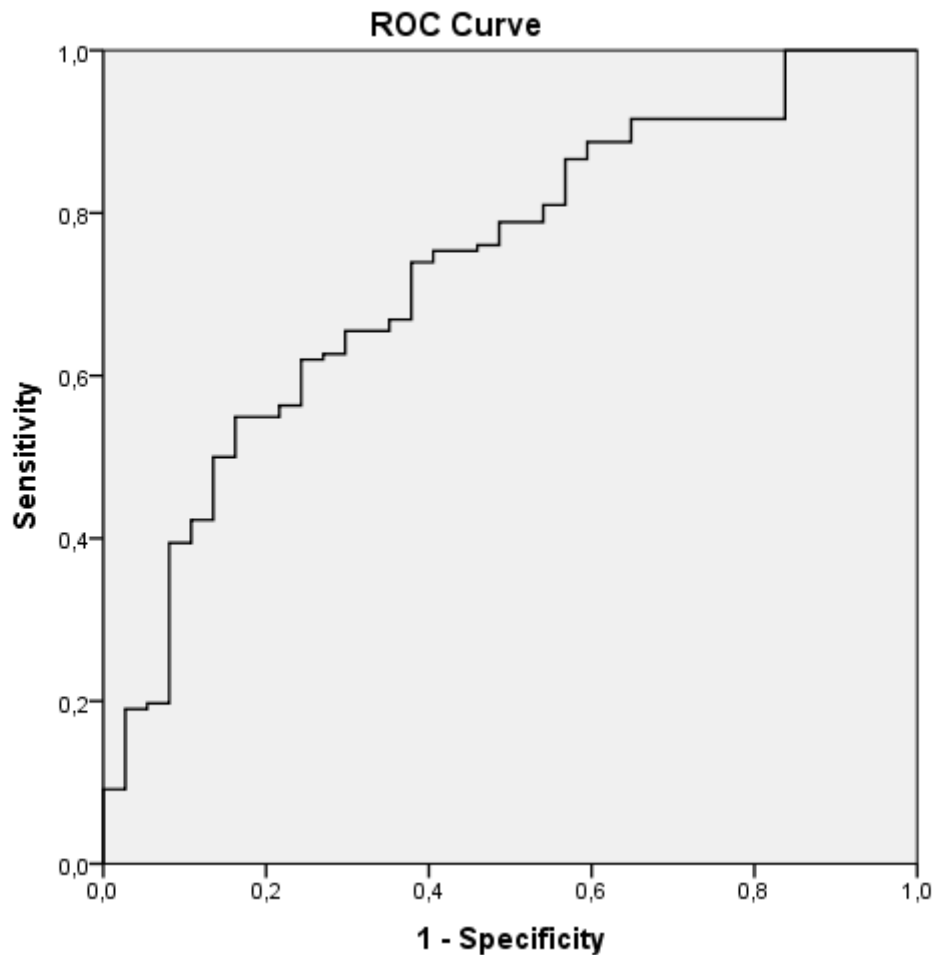
Figure 1e. ROC curve indicating effectiveness of COMPASS 31 total score in detection of MS patients with Bladder domain score greater than 0



Bladder domain

- The area under the curve was 0.771.
- Optimal cut-off :
Total COMPASS 31 score=9.0 → Sensitivity=0.788; Specificity=0.585
- Mean value cut-off:
Total COMPASS 31 score=16.3 → Sensitivity=0.565; Specificity=0.745

Figure 1f ROC curve indicating effectiveness of COMPASS 31 total score in detection of MS patients with Pupillomotor domain score greater than 0



Pupillomotor domain

- The area under the curve was 0.733.
- Optimal cut-off :
Total COMPASS 31 score=6.8 → Sensitivity=0.754; Specificity=0.595
- Mean value cut-off:
Total COMPASS 31 score=16.3 → Sensitivity=0.472; Specificity=0.865