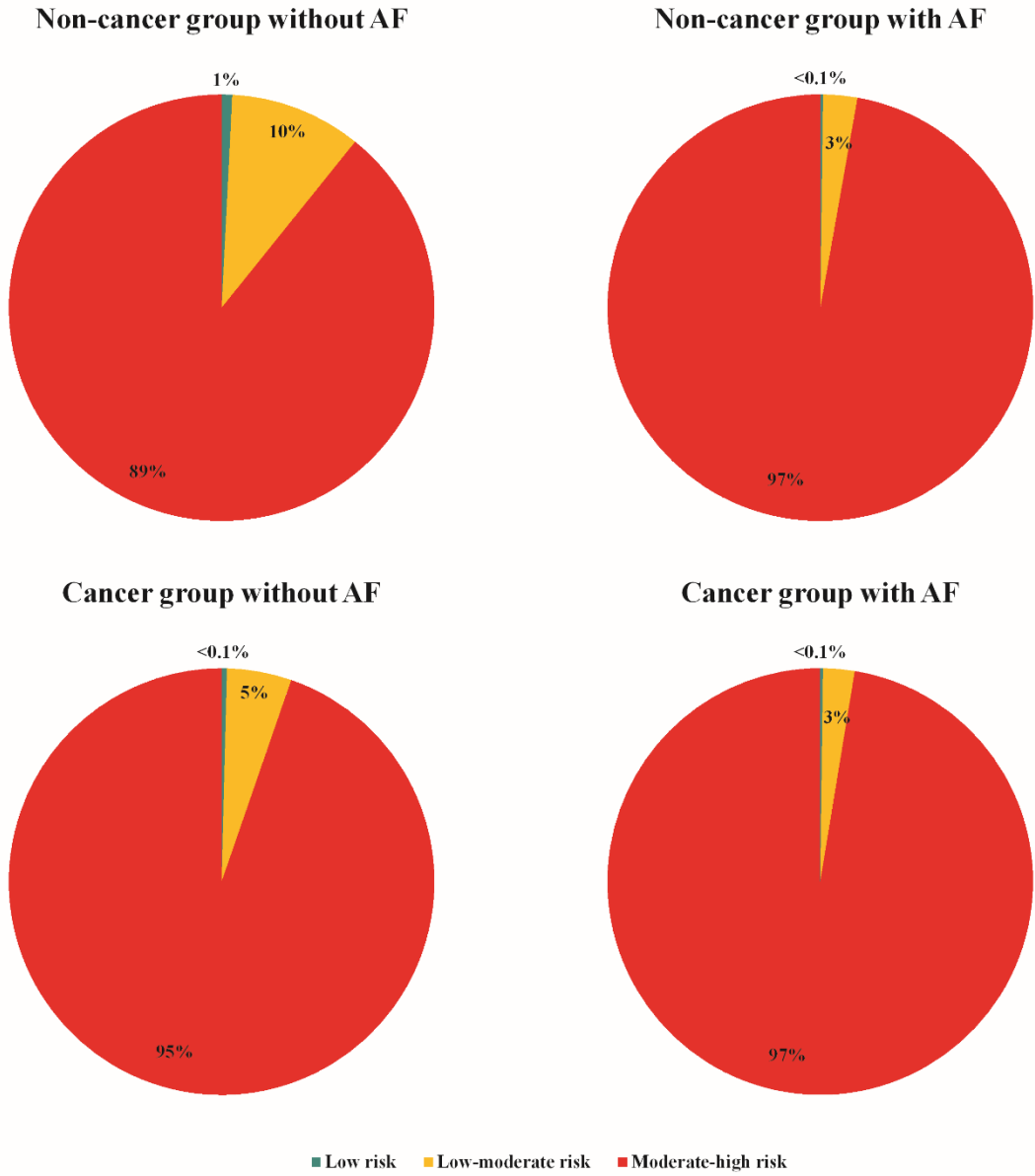


Supplementary Figure 3. Total study population stratified by CHA2DS2VASc risk score according to cancer and AF presence.



Abbreviations: AF – atrial fibrillation; CHA2DS2VASc risk score – risk score composed of the following components: congestive heart failure, arterial hypertension, age cut-offs (65-75 and ≥ 75 years), diabetes mellitus, previous stroke, vascular disease and sex category.

Notes: Low risk includes CHA2DS2VASc=0 in males; CHA2DS2VASc=1 in females. Low-moderate risk includes CHA2DS2VASc=1 in males; CHA2DS2VASc=2 in females. Moderate-high risk includes CHA2DS2VASc ≥ 2 in males; CHA2DS2VASc ≥ 3 in females.